

Review paper

Primary synovial sarcoma on MRI – a case series and review of the literature

Maya Sedaghat^{1,A,B,C,D,E,F,G}, Sam Sedaghat^{2,A,B,C,D,E,F,G}

¹Department for Radiology and Neuroradiology, University Hospital Schleswig-Holstein, Campus Kiel, Germany

²Department of Diagnostic and Interventional Radiology, University Hospital Heidelberg, Germany

Abstract

Purpose: Simple MRI features are mandatory to facilitate the diagnostics of synovial sarcomas, especially for radiologists outside multidisciplinary sarcoma centres. In this case-series and review, we investigate the main appearance of synovial sarcoma on MRI.

Material and methods: Fifteen histologically proven primary synovial sarcomas who underwent MRI at 2 different sarcoma centres were included in this case series. Patients and their primary synovial sarcomas were examined for age, localization, mean tumour size (in mm), histological grade (G – according to the Fédération Nationale des Centres de Lutte Contre Le Cancer [FNCLCC]), configuration, T2 signal intensity, presence/absence of “triple sign”, heterogeneity/homogeneity, borders (well-defined or infiltrative), and intensity of contrast enhancement on MRI. Additionally, a comprehensive literature review to identify observational studies, reviews, and case-reports assessing MRI features of primary synovial sarcoma was performed.

Results: The mean age of the patients was 47.6 years (SD: 17.2). The mean size of primary synovial sarcoma was 59.3 mm (SD: 42). Primary synovial sarcomas were significantly most often multilobulated ($n = 12, p < 0.01$), heterogeneous ($n = 10$), and infiltrative ($n = 9$). Additionally, 3 other primary synovial sarcomas showed the following configurations: ovoid/nodular ($n = 2$) and fascicular ($n = 1$). Ovoid/nodular synovial sarcomas were solely depicted as homogeneous with well-defined borders. All tumours showed T2 hyperintense signal and presented with marked contrast enhancement.

Conclusions: Primary synovial sarcomas are mainly multilobulated, heterogeneous, and infiltrative tumours. In minor cases, ovoid/nodular or fascicular configurations occur. Knowing the main appearance of synovial sarcoma can help facilitate the diagnostics of primary synovial sarcomas.

Key words: soft tissue sarcoma, imaging, MRI, synovial sarcoma, review, radiology.

Introduction

Synovial sarcomas are relatively rare malignancies, accounting for about 2.5 to 10% of all soft-tissue sarcomas [1-3]. Both genders are affected equally, and the mean age at first diagnosis is 32 years [2]. Synovial sarcomas occur in various locations, but most cases are reported in the extremities (80-95%), mainly in the lower limbs [2,4]. Numerous studies have reported that synovial sarcomas

are high-grade malignancies with a high rate of metastasis, particularly to the lungs, and show 5- and 10-year survival rates of 24-68% and 11-56%, respectively [5-7]. Therefore, precise diagnostics is essential. Magnetic resonance imaging (MRI) is the imaging modality of choice for detecting synovial sarcomas because it best characterizes intratumoural architecture, perilesional oedema, and involvement of other structures [1,8]. Nevertheless, synovial sarcomas are often misdiagnosed, especially in small

Correspondence address:

Sam Sedaghat, MD, Department of Diagnostic and Interventional Radiology, University Hospital Heidelberg, Germany, e-mail: samsedaghat1@gmail.com

Authors' contribution:

A Study design · B Data collection · C Statistical analysis · D Data interpretation · E Manuscript preparation · F Literature search · G Funds collection

lesions, due to the lack of characteristic clinical manifestations and specific imaging features [4,9]. Additionally, patients with primary synovial sarcomas are often admitted to hospitals outside of multidisciplinary sarcoma centres for first-line diagnostics, because the ultimate diagnosis is often pending at that time. A novel and simple approach is to classify soft-tissue sarcomas (STS) by characterizing their configurations on MRI [10,11]. The term “configuration” refers to the overall appearance of the tumour. Previous studies presented typical configurations of some soft tissue sarcomas and tumours [10-13]. Combining the configuration and other described features of synovial sarcomas in the literature could allow facilitated diagnostics of primary synovial sarcomas in the routine clinical setting. Therefore, our case series and review investigates the main appearance of synovial sarcomas, including the configuration on MRI.

Material and methods

Case series

We included a case series of 15 histologically proven primary synovial sarcomas who underwent MRI at 2 different sarcoma centres. Patients and their primary synovial sarcomas were examined for age, localization, mean tumour size (in mm), histological grade (G – according to the *Fédération Nationale des Centres de Lutte Contre Le Cancer* [FNCLCC]), configuration, T2 signal intensity, presence/absence of the “triple sign”, heteroge-

neity/homogeneity, borders (well-defined or infiltrative), and intensity of contrast enhancement on MRI. Magnetic resonance imaging was performed with a 1.5-Tesla MRI system. A musculoskeletal radiologist with a minimum of 5 years of experience in sarcoma diagnostics reviewed each MRI.

Review

We performed a comprehensive literature review to identify observational studies, reviews, and case-reports assessing MRI features of primary synovial sarcoma. Four online databases, including PubMed/Medline, Embase, Scopus, and Web of Science, were systematically searched using selected keywords. These selected keywords and terms included “synovial sarcoma”, “MRI”, “magnetic resonance imaging”, “features”, “primary synovial sarcoma”, and “configuration”. Only studies that included both MRI features and primary synovial sarcomas were included. Manuscripts or parts of manuscripts dealing with information not related to MRI features and primary synovial sarcomas were not evaluated. Grey literature or literature produced outside of the traditional academic publishing channels, articles lacking available full texts, and publications without a focus on MRI were excluded.

Statistical data

Data are given as mean values with standard deviation (SD). The Mann-Whitney *U*-test was performed to com-

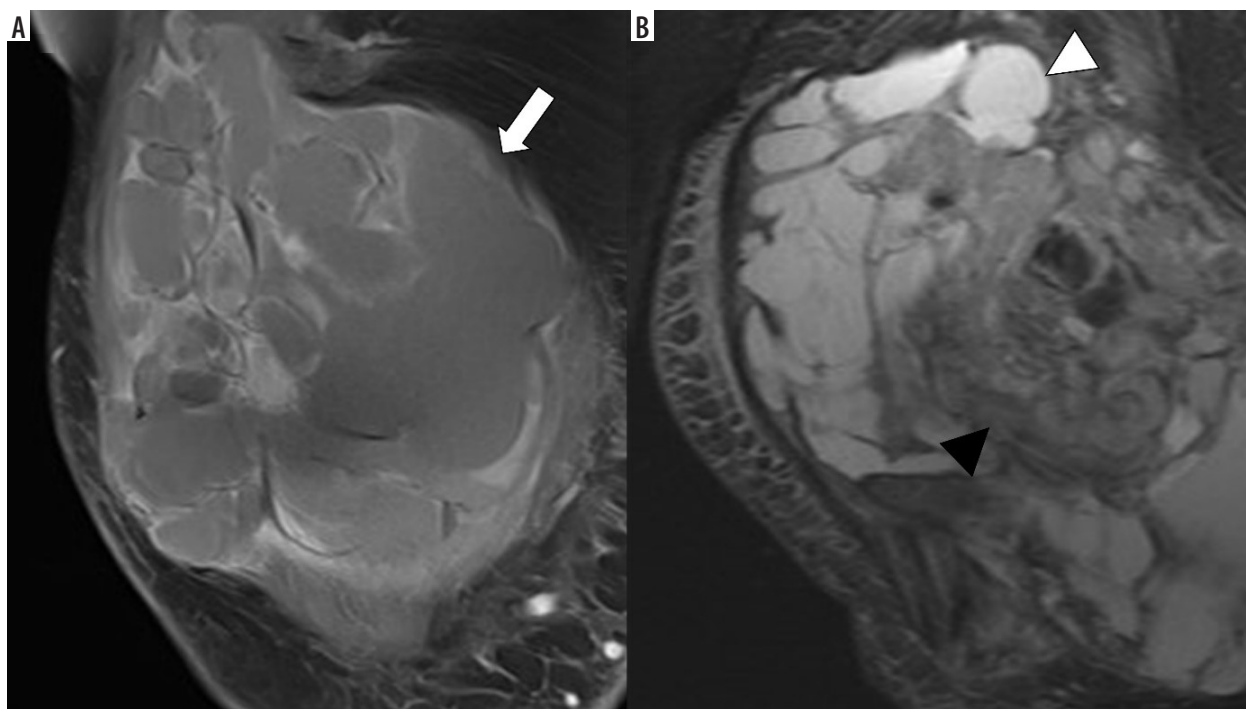


Figure 1. 1.5-T MRI (T1w FS after application of IV gadolinium) of the thigh of a 41-year-old patient. **A)** A primary synovial sarcoma. **B)** The recurrent synovial sarcoma after resectioning the primary tumour. Both tumours have a multilobulated configuration (white arrow) with polycystic (white arrowhead) and solid (black arrowhead) components

pare group values. The statistical significance for all tests was set at $p < 0.05$. Statistical analysis was done using the IBM-SPSS version 26.0 software package (IBM, Armonk, NY, USA).

Results of the case series

The mean age of the patients was 47.6 years (SD: 17.2). Eleven patients were female. The mean size of primary synovial sarcoma was 59.3 mm (SD: 42 mm). Eight synovial sarcomas were classified as G3 and 7 as G2 according to the *Fédération Nationale des Centres de Lutte Contre Le Cancer* (FNCLCC). Primary synovial sarcomas most often occurred in the thigh ($n = 4$). Primary synovial sarcomas were significantly most often multilobulated ($p < 0.01$; Figure 1, Table 1). The multilobulated synovial sarcomas mainly presented as heterogeneous ($n = 10$) and infiltrative ($n = 9$). Additionally, 3 other primary synovial sarcomas showed the following configurations: ovoid/nodular ($n = 2$; Figure 2, Table 1) and fascicular ($n = 1$; Figure 3, Table 1). Ovoid/nodular synovial sarcomas were solely depicted as homogeneous with well-defined borders. All tumours showed a T2 hyperintense signal in major or all parts of the tumours and presented with marked contrast enhancement. Nine multilobulated tumours showed a “triple sign”. None of the ovoid/nodular or fascicular configured tumors presented “triple signs”. Table 1 illustrates an overview of the appearances of the included primary synovial sarcomas.

Discussion

Studies on the main appearance of synovial sarcomas, including the configurations, are still lacking, unlike some other soft tissue sarcomas and tumours, which are already systematically analysed regarding their appearances and configurations on MRI [10-16]. Therefore, our case series analysed the main appearances and configurations of 15 consecutive cases of primary synovial sarcomas. Statements from the literature on the configuration of synovial sarcomas are often contradictory. Some authors reported synovial sarcomas to show a multilobulated appearance in a few cases [2,4,17-25], while Valenzuela *et al.* described synovial sarcoma as mainly oval tumours [26]. However, the information about synovial sarcoma configurations is only found as side notes within long articles about other synovial sarcoma features. A systematic analysis of the synovial sarcoma configuration has never been performed. The multilobulated configuration, the leading configuration in synovial sarcomas, refers to those tumour appearances described as prominent, heterogeneously enhancing solid tumours, with no enhancement in the areas containing cysts, necrosis, or septation [2,4,8,17,23]. Recent studies described STS configurations as suitable for predicting tumour grades of primary STS or the configuration of recurrences [27,28]. Li *et al.* pointed out

Table 1. Appearance and baseline information of 15 consecutive cases of primary synovial sarcoma on MRI

Case number	Age	Localization	Mean size (mm)	Histological grade (G)	Configuration	T2 signal intensity	Triple sign	Heterogeneity/homogeneity	Borders	Contrast enhancement
1	72	Thigh	46	3	Multilobulated	Hyperintense	Yes	Heterogenous	Infiltrative	++
2	19	Groin	68	3	Multilobulated	Hyperintense	Yes	Heterogenous	Infiltrative	+++
3	45	Knee	75	3	Multilobulated	Hyperintense	Yes	Heterogenous	Infiltrative	+++
4	71	Neck	33	2	Multilobulated	Hyperintense	No	Homogenous	Infiltrative	+++
5	42	Elbow	32	3	Multilobulated	Hyperintense	Yes	Heterogenous	Infiltrative	+++
6	41	Hand	40	2	Fascicular	Hyperintense	No	Homogenous	Infiltrative	++
7	41	Thigh	168	3	Multilobulated	Hyperintense	Yes	Heterogenous	Infiltrative	++
8	35	Groin	14	2	Ovoid/nodular	Hyperintense	No	Homogeneous	Well-defined	+++
9	18	Thigh	139	3	Multilobulated	Hyperintense	Yes	Heterogenous	Infiltrative	++
10	67	Axilla	41	3	Multilobulated	Hyperintense	Yes	Heterogenous	Infiltrative	+++
11	61	Knee	54	2	Multilobulated	Hyperintense	No	Homogeneous	Well-defined	++
12	65	Foot	57	2	Multilobulated	Hyperintense	Yes	Heterogenous	Infiltrative	++
13	49	Pelvis	29	2	Ovoid/nodular	Hyperintense	No	Homogenous	Well-defined	+++
14	52	Thigh	64	3	Multilobulated	Hyperintense	Yes	Heterogenous	Well-defined	+++
15	36	Hand	30	2	Multilobulated	Hyperintense	No	Heterogenous	Well-defined	+++

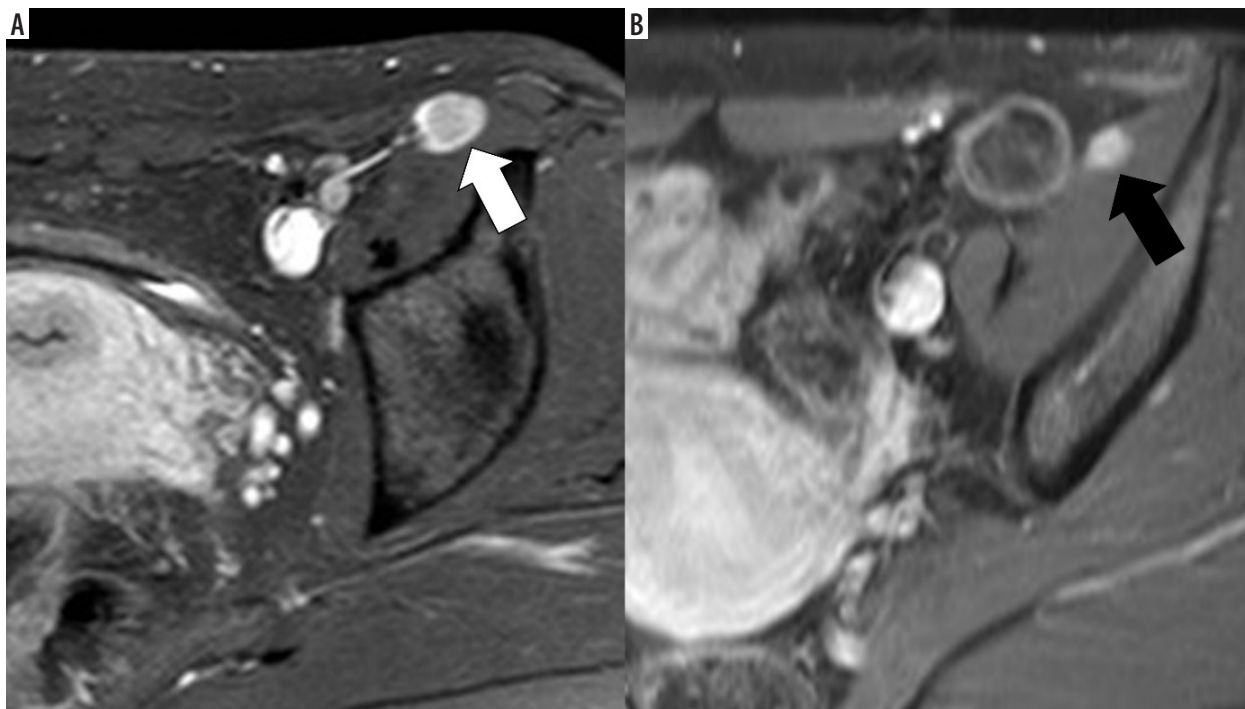


Figure 2. 1.5-T MRI (T1w FS after administering IV gadolinium) of the left iliac region of a 31-year-old patient. **A)** A primary synovial sarcoma. **B)** A recurrent synovial sarcoma. Both tumours are ovoid/nodular and homogeneous

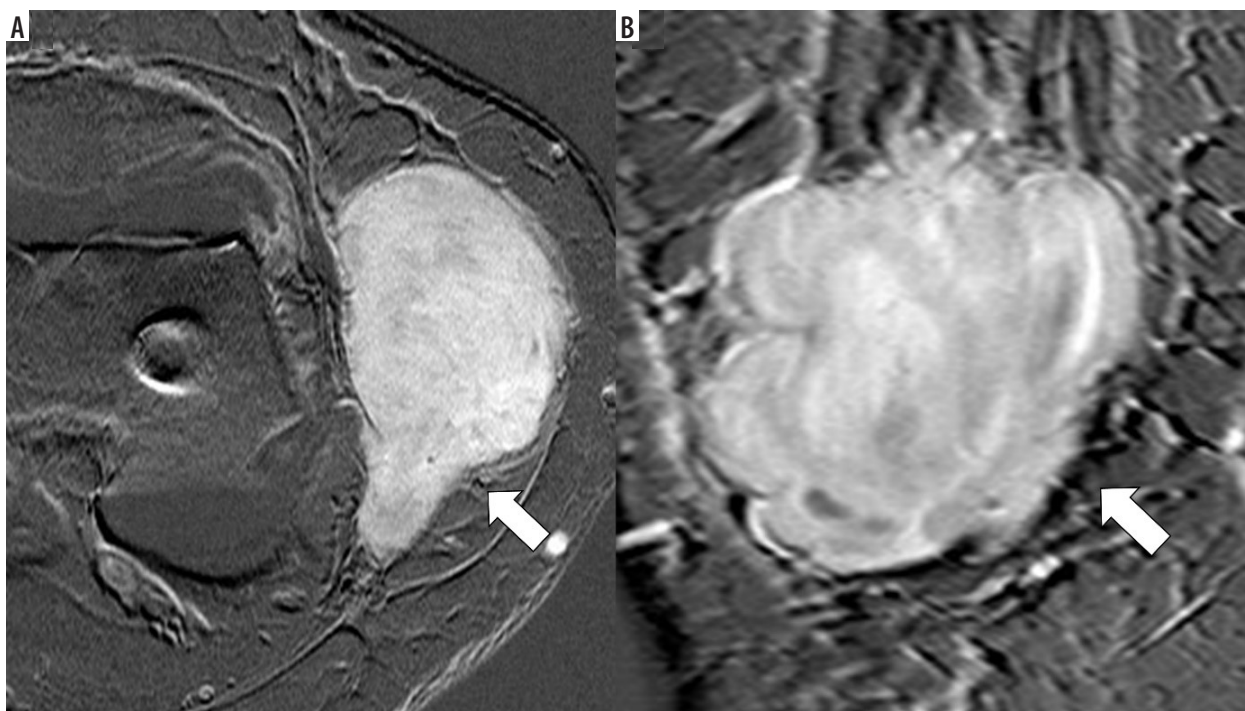


Figure 3. 1.5-T MRI (subtraction after administering IV gadolinium) of the knee of a 61-year-old patient. A primary synovial sarcoma in axial (**A**) and coronal (**B**) views. The tumour appears fascicular and homogeneous (white arrow)

the configuration of STS as a significant predictor of the hypoxia-inducible factor 1- α (HIF-1 α) expression, which determines patients' outcomes. Accordingly, patients with multilobulated STS are at a higher risk of a worse outcome than those with non-multilobulated STS [29].

As well as the configuration, we also investigated other synovial sarcoma features such as T2 signal, presence/

absence of the "triple sign", heterogeneity/homogeneity, infiltrative behaviour, and intensity of contrast enhancement. Because the first MRI examination of synovial sarcomas often takes place outside of multicentre sarcoma centres and as it is unusual that patients undergo their MRI follow-up scans for years in the same radiological department [30], radiologists and non-radiologists

need to know about the main appearance of synovial sarcomas on MRI. Synovial sarcomas occur commonly in the extremities, most often in the lower extremities, accounting for approximately 70% of cases [1,31-33]. This is mainly concurrent with our study, where most cases are presented in the extremities. Previous studies showed a mean size of primary synovial sarcoma of 8.5 cm, ranging from 6.2 to 15 cm [4,8]. In our case series, the tumours were slightly smaller, with a mean size of 5.9 cm. Additionally, previous studies mentioned tumour sizes of over 5 cm associated with poor patient outcomes [34-36]. Synovial sarcomas are often described as heterogeneous tumours with a hyperintense signal on T2w (weighted) images [24,26,37]. Hyperintense signals on T2w images are mainly observed in necrotic and cystic areas [4]. A “triple sign” with areas of low, intermediate, and high signal on T2w images is often described in the literature and emphasizes the heterogeneity of the tumour mass [2,38]. Liang *et al.* wrote that heterogeneity is usually apparent in lesions > 5 cm [4]. Heterogeneity is mainly caused by haemorrhage and/or necrosis, cystic parts with fluid-fluid levels, septa (“bowl of grapes sign”), calcifications, and fibrotic tissue [2,25,39], leading to an appearance of both cystic and solid elements [33]. However, not all synovial sarcomas demonstrate a typical “triple sign”. Liang *et al.* found “triple signs” in only 50% of the cases, while Jones *et al.* described only 35% of all synovial sarcomas to present with this feature [4,23]. Against this, Ashikyan *et al.* stated that the “triple sign” was seen in 80% of synovial sarcomas [40]. In our case series 60% of the tumours showed a “triple sign”, all of which were found in multilobulated synovial sarcomas. While Valenzuela *et al.* described a cystic component in 77% of the cases [26], Ashikyan *et al.* described cystic areas in only 29% of synovial sarcomas [40]. Also, intratumoural haemorrhage is expressed in different frequencies and ranges from one in five cases [37] to 73% of

cases [26]. Jones *et al.* found intratumoural haemorrhage in 44% of the cases [23]. Other features are quite variable, as well. The variance for fluid-fluid levels, considered a specific imaging feature of synovial sarcoma, lies around 18-73% [4,23,33]. Nevertheless, small lesions (< 5 cm) might be different and present as homogeneous on T2w images [23,25], although Ashikyan *et al.* did not find any homogeneous synovial sarcoma in their study [40]. Using contrast-enhanced sequences emphasizes tumour heterogeneity because most lesions present heterogeneous contrast enhancement with no enhancement in areas of cystic necrosis or internal septations [4,24]. Tumours of smaller size (< 5 cm) often show homogeneous enhancement [4,21,41]. Additionally, Morton *et al.* characterized synovial sarcomas with mainly infiltrative tumour margins [17]. Our case series revealed that most primary synovial sarcomas are mainly multilobulated, heterogeneous, infiltrative, and T2 hyperintense masses with marked contrast enhancement and “triple signs” in many cases. Only a few of our cases showed an ovoid/nodular or a fascicular configuration. Ovoid/nodular synovial sarcomas are homogeneous masses with marked contrast enhancement and without “triple signs”.

Conclusions

Synovial sarcomas are mainly multilobulated, heterogeneous, infiltrative, and T2 hyperintense masses with marked contrast enhancement. Knowing about the main appearance of synovial sarcomas on MRI allows radiologists and other clinicians to evaluate the presence or absence of a possible synovial sarcoma on MRI.

Conflict of interest

The authors report no conflict of interest.

References

- Bakri A, Shinagare AB, Krajewski KM, et al. Synovial sarcoma: imaging features of common and uncommon primary sites, metastatic patterns, and treatment response. *AJR Am J Roentgenol* 2012; 199: W208-W215.
- Murphey MD, Gibson MS, Jennings BT, et al. Imaging of synovial sarcoma with radiologic-pathologic correlation. *Radiographics* 2006; 26: 1543-1565.
- Ferrari A, Gronchi A, Casanova M, et al. Synovial sarcoma: a retrospective analysis of 271 patients of all ages treated at a single institution. *Cancer* 2004; 101: 627-634.
- Liang C, Mao H, Tan J, et al. Synovial sarcoma: magnetic resonance and computed tomography imaging features and differential diagnostic considerations. *Oncol Lett* 2015; 9: 661-666.
- Bergh P, Meis-Kindblom JM, Gherlinzoni F et al. Synovial sarcoma: identification of low and high risk groups. *Cancer* 1999; 85: 2596-2607.
- Choong P, Pritchard D, Sim F, et al. Long-term survival in high-grade soft-tissue sarcoma – prognostic factors in synovial sarcoma. *Int J Oncol* 1995; 7: 161-169.
- Oda Y, Hashimoto H, Tsuneyoshi M, et al. Survival in synovial sarcoma. A multivariate study of prognostic factors with special emphasis on the comparison between early death and long-term survival. *Am J Surg Pathol* 1993; 17: 35-44.
- Baheti AD, Tirumani SH, Sewatkar R, et al. Imaging features of primary and metastatic extremity synovial sarcoma: a single institute experience of 78 patients. *Br J Radiol* 2015; 88: 20140608.
- Fisher C. Synovial sarcoma. *Ann Diagn Pathol* 1998; 2: 401-421.
- Sedaghat S, Schmitz F, Krieger A, et al. Appearance of recurrent adult fibrosarcoma of the soft tissue and loco-regional post-treatment changes on MRI follow-up. *Eur J Plast Surg* 2021; 44: 97-102.
- Sedaghat S, Schmitz F, Grözinger M, et al. Malignant peripheral nerve sheath tumours in magnetic resonance imaging: primary and

- recurrent tumour appearance, post-treatment changes, and metastases. *Pol J Radiol* 2020; 85: e196-e201. doi: 10.5114/pjr.2020.94687.
12. Sedaghat S, Surov A, Krohn S, et al. Configuration of primary and recurrent aggressive fibromatosis on contrast-enhanced MRI with an evaluation of potential risk factors for recurrences in MRI follow-up. *Rofo* 2020; 192: 448-457.
 13. Sedaghat S, Schmitz F, Sedaghat M, et al. Appearance of recurrent dermatofibrosarcoma protuberans in postoperative MRI follow-up. *J Plast Reconstr Aesthet Surg* 2020; 73: 1960-1965.
 14. Sedaghat S, Sedaghat M, Krohn S, et al. Long-term diagnostic value of MRI in detecting recurrent aggressive fibromatosis at two multidisciplinary sarcoma centers. *Eur J Radiol* 2021; 134: 109406. doi: 10.1016/j.ejrad.2020.109406.
 15. Sedaghat S, Sedaghat M, Meschede J, et al. Diagnostic value of MRI for detecting recurrent soft-tissue sarcoma in a long-term analysis at a multidisciplinary sarcoma center. *BMC Cancer* 2021; 21: 398. doi: 10.1186/s12885-021-08113-y.
 16. Sedaghat S, Schmitz F, Meschede J, et al. Systematic analysis of post-treatment soft-tissue edema and seroma on MRI in 177 sarcoma patients. *Surg Oncol* 2020; 35: 218-223.
 17. Morton MJ, Berquist TH, McLeod RA, et al. MR imaging of synovial sarcoma. *Am J Roentgenol* 1991; 156: 337-340.
 18. Mahajan H, Lorigan JG, Shirkhoda A. Synovial sarcoma: MR imaging. *Magn Reson Imaging* 1989; 7: 211-216.
 19. Isaac O, Thieme K. Biochemische Untersuchungen von Kamilleneinhaltsstoffen. III. In-vitro-Versuche über die antipeptische Wirkung des (-)-alpha-Bisabolols. *Arzneimittelforschung* 1975; 25: 1352-1354.
 20. Hirsch RJ, Yousem DM, Loevner LA, et al. Synovial sarcomas of the head and neck: MR findings. *Am J Roentgenology* 1997; 169: 1185-1188.
 21. Blacksin MF, Siegel JR, Benevenia J, et al. Synovial sarcoma: frequency of nonaggressive MR characteristics. *J Comput Assist Tomogr* 1997; 21: 785-789.
 22. Bernreuter WK, Sartoris DJ, Resnick D. Magnetic resonance imaging of synovial sarcoma. *J Foot Surg* 1990; 29: 94-100.
 23. Jones BC, Sundaram M, Kransdorf MJ. Synovial sarcoma: MR imaging findings in 34 patients. *Am J Roentgenology* 1993; 161: 827-830.
 24. Duran-Mendicuti A, Costello P, Vargas SO. Primary synovial sarcoma of the chest: radiographic and clinicopathologic correlation. *J Thorac Imaging* 2003; 18: 87-93.
 25. Bermejo A, Bustamante TD de, Martinez A, et al. MR imaging in the evaluation of cystic-appearing soft-tissue masses of the extremities. *Radiographics* 2013; 33: 833-855.
 26. Valenzuela RF, Kim EE, Seo JG, et al. A revisit of MRI analysis for synovial sarcoma. *Clin Imaging* 2000; 24: 231-235.
 27. Sedaghat S, Ravesh MS, Sedaghat M, et al. Configuration of soft-tissue sarcoma on MRI correlates with grade of malignancy. *Radiol Oncol* 2021; 55: 158-163.
 28. Sedaghat S, Ravesh MS, Sedaghat M, et al. Does the primary soft-tissue sarcoma configuration predict configuration of recurrent tumors on magnetic resonance imaging? *Acta Radiol* 2022; 63: 642-651.
 29. Li X, Xie Y, Hu Y, et al. Soft tissue sarcoma: correlation of dynamic contrast-enhanced magnetic resonance imaging features with HIF-1 α expression and patient outcomes. *Quant Imaging Med Surg* 2022; 12: 4823-4836.
 30. Aga P, Singh R, Parihar A, et al. Imaging spectrum in soft tissue sarcomas. *Indian J Surg Oncol* 2011; 2: 271-279.
 31. Kransdorf MJ. Malignant soft-tissue tumors in a large referral population: distribution of diagnoses by age, sex, and location. *Am J Roentgenol* 1995; 164: 129-134.
 32. McCarville MB, Spunt SL, Skapek SX, et al. Synovial sarcoma in pediatric patients. *Am J Roentgenol* 2002; 179: 797-801.
 33. O'Sullivan PJ, Harris AC, Munk PL. Radiological features of synovial cell sarcoma. *Br J Radiol* 2008; 81: 346-356.
 34. Ladanyi M, Antonescu CR, Leung DH, et al. Impact of SYT-SSX fusion type on the clinical behavior of synovial sarcoma: a multi-institutional retrospective study of 243 patients. *Cancer Res* 2002; 62: 135-140.
 35. Krieg AH, Hefti F, Speth BM, et al. Synovial sarcomas usually metastasize after > 5 years: a multicenter retrospective analysis with minimum follow-up of 10 years for survivors. *Ann Oncol* 2010; 22: 458-467.
 36. Heuvel SE ten, Hoekstra HJ, Bastiaannet E, et al. The classic prognostic factors tumor stage, tumor size, and tumor grade are the strongest predictors of outcome in synovial sarcoma: no role for SSX fusion type or ezrin expression. *Appl Immunohistochem Mol Morphol* 2009; 17: 189-195.
 37. Hu PA, Zhou ZR. Clinical, pathological and unusual MRI features of five synovial sarcomas in head and neck. *Br J Radiol* 2015; 88: 20140843. doi: 10.1259/bjr.20140843.
 38. Tordjman M, Honoré C, Crombé A, et al. Prognostic factors of the synovial sarcoma of the extremities: imaging does matter. *Eur Radiol* 2023; 33: 1162-1173.
 39. Faur CI, Pop DL, Abu Awwad A, et al. Synovial sarcoma of the extremities: a literature review. *Appl Sci* 2021; 11: 7407. doi: <https://doi.org/10.3390/app11167407>.
 40. Ashikyan O, Bradshaw SB, Dettori NJ, et al. Conventional and advanced MR imaging insights of synovial sarcoma. *Clin Imaging* 2021; 76: 149-155.
 41. Rangheard AS, Vanel D, Viala J, et al. Synovial sarcomas of the head and neck: CT and MR imaging findings of eight patients. *AJNR Am J Neuroradiol* 2001; 22: 851-857.